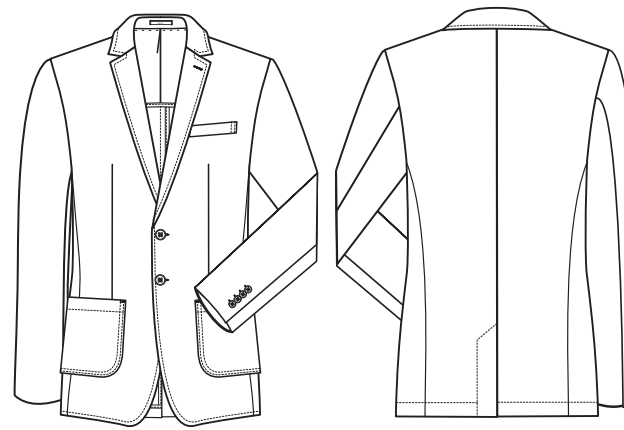


# CASUAL

## Regular Fit



# STYLE

## 1128



### GERMAN

#### HERREN-SAKKO

- Regular Fit
- 2-Knopf
- 2 aufgesetzte Taschen
- 1 Brustleistentasche
- 2 Innentaschen
- Zierstepp
- Rückenschlitz
- Kontrast-Halbfutter
- Rückenlänge 73 cm | Gr. 50
- **GRÖSSEN:** 44-62, 90-110

NR: 1128.2700.010 SCHWARZ  
NR: 1128.2700.020 MARINE

### ENGLISH

#### MEN'S JACKET

- regular fit
- 2-button
- 2 patched pockets
- 1 breast welt pocket
- 2 inside pockets
- decorative topstitching
- back vent
- contrast half-lining
- back length 73 cm | size 50
- **SIZES:** 44-62, 90-110

NO: 1128.2700.010 BLACK  
NO: 1128.2700.020 NAVY BLUE

### FRENCH

#### VESTON HOMME

- Regular fit
- 2 boutons
- 2 poches plaquées
- 1 poche poitrine
- 2 poches intérieures
- Surpiqures
- Fente de dos
- Semi-doublure contrastante
- Longueur dos 73 cm | taille 50
- **TAILLES :** 44-62, 90-110

RÉF : 1128.2700.010 NOIR  
RÉF : 1128.2700.020 BLEU MARINE

### DUTCH

#### HEREN COLBERT

- regular fit
- 2 knoops
- 2 opgezette zakken
- 1 borstzakje
- 2 binnenzakken
- siernaad
- rugsplit
- half gevoerd met contrasterende stof
- ruglengte 73 cm | maat 50
- **MAAT:** 44-62, 90-110

NR: 1128.2700.010 ZWART  
NR: 1128.2700.020 MARINE

**GEWEBE:** 40% Baumwolle, 30% Polyester, 30% Elastomultiester, 205 g/m<sup>2</sup>

**FUTTER:** 75% Baumwolle, 25% Polyester

**PFLERGE:**



**FABRIC:** 40% cotton, 30% polyester, 30% elastomultiester, 205 g/m<sup>2</sup>

**LINING:** 75% cotton, 25% polyester

**CARE:**



**TEXTILE :** 40 % coton, 30 % polyester, 30 % élastomultiester, 205 g/m<sup>2</sup>

**DOUBLURE :** 75 % coton, 25 % polyester

**ENTRETIEN :**



**DOEK:** 40% katoen, 30% polyester, 30% elastomultiester, 205 g/m<sup>2</sup>

**BINNENVOERING:** 75% katoen, 25% polyester

**ONDERHOUD:**

