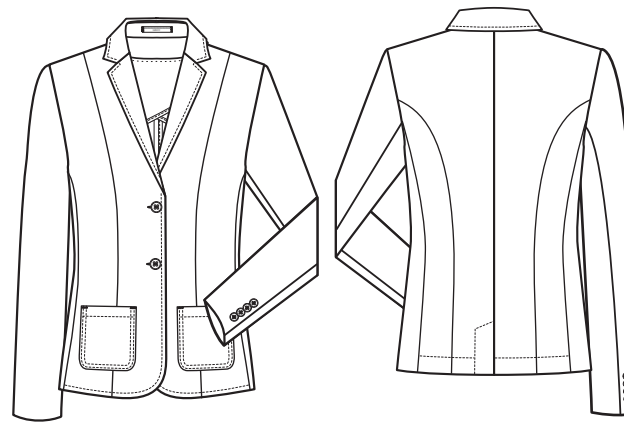


CASUAL

Regular Fit



STYLE

1428



GERMAN

DAMEN-BLAZER

- Regular Fit
- 2-Knopf
- 2 aufgesetzte Taschen
- 1 Innentasche
- Zierstepp
- Rückenschlitz
- Kontrast-Halbfutter
- Rückenlänge 60 cm | Gr. 38
- **GRÖSSEN:** 32-52

NR: 1428.2700.010 SCHWARZ
NR: 1428.2700.020 MARINE

ENGLISH

LADIES -BLAZER

- regular fit
- 2-button
- 2 patched pockets
- 1 inside pocket
- decorative topstitching
- back vent
- contrast half-lining
- back length 60 cm | size 38
- **SIZES:** 32-52

NO: 1428.2700.010 BLACK
NO: 1428.2700.020 NAVY BLUE

FRENCH

BLAZER FEMME

- Regular fit
- 2 boutons
- 2 poches plaquées
- 1 poche intérieure
- Surpiqûres
- Fente de dos
- Semi-doublure contrastante
- Longueur dos 60 cm | taille 38
- **TAILLES :** 32-52

RÉF : 1428.2700.010 NOIR
RÉF : 1428.2700.020 BLEU MARINE

DUTCH

DAMES BLAZER

- regular fit
- 2 knoops
- 2 opgezette zakken
- 1 binnenzak
- siernaad
- split achterzijde
- half gevoerd met contrasterende stof
- ruglengte 60 cm | maat 38
- **MAAT:** 32-52

NR: 1428.2700.010 ZWART
NR: 1428.2700.020 MARINE

GEWEBE: 40% Baumwolle, 30% Polyester, 30% Elastomultiester, 205 g/m²
FUTTER: 75% Baumwolle, 25% Polyester

PFLERGE:



FABRIC: 40% cotton, 30% polyester, 30% elastomultiester, 205 g/m²
LINING: 75% cotton, 25% polyester

CARE:



TEXTILE : 40 % coton, 30 % polyester, 30 % élastomultiester, 205 g/m²
DOUBLURE : 75 % coton, 25 % polyester

ENTRETIEN :



DOEK: 40% katoen, 30% polyester, 30% elastomultiester, 205 g/m²

BINNENVOERING: 75% katoen, 25% polyester

ONDERHOUD:

