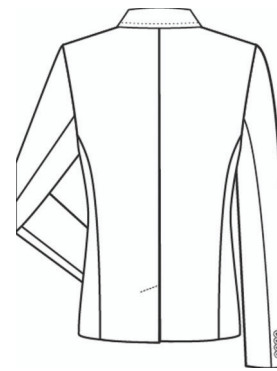
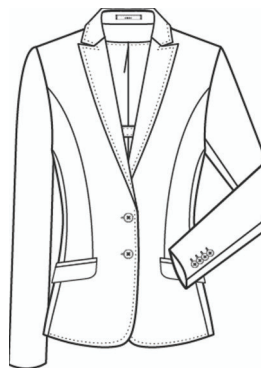


MODERN 37.5

Slim Fit



STYLE

1426



GREIFF

DEUTSCH

Damen-Blazer SF Modern 37.5

- 2-Knopf
- Spitzfacon
- 2 Pattentaschen
- 1 Reißverschluss-Innentasche
- AMF-Handstich
- Rückenschlitz
- halbgefüttert
- Rückenlänge 56 cm | Gr. 38

ENGLISH

L blazer SF Modern 37.5

- 2-button
- peaked lapel
- 2 flap pockets
- 1 zip pocket inside
- AMF hand stitch
- back vent
- half lined
- back length 56 cm | size 38

FRANCAIS

Blazer F SF Modern 37.5

- 2 boutons
- revers à pointe
- 2 poches à rabat
- 1 poche intérieure zippée
- couture AMF
- fente dos
- semi-doublure
- longueur dos 56 cm | taille 38

NEDERLANDS

D blazer SF Modern 37.5

- 2 knoops
- puntig revers
- 2 klepzakken
- 1 binnenzak met ritssluiting
- AMF-stitching
- rugsplit
- half gevoerd
- ruglengte 56 cm | maat 38

NR: 1426.2810.010 pinpoint schwarz

NR: 1426.2810.020 pinpoint marine

NO: 1426.2810.010 pinpoint black

NO: 1426.2810.020 pinpoint navy blue

RÉF: 1426.2810.010 pinpoint noir

RÉF: 1426.2810.020 pinpoint bleu marine

NR: 1426.2810.010 pinpoint zwart

NR: 1426.2810.020 pinpoint marine

GRÖSSEN: 32 - 42

GEWEBE: 52 % Polyester 190 g/m²
46 % Schurwolle
2 % Elasthan

SIZES: 32 - 42

FABRIC: 52 % polyester 190 g/m²
46 % virgin wool
2 % elastane

TAILLES: 32 - 42

TEXTILE: 52 % polyester 190 g/m²
46 % laine vierge
2 % élasthanne

MAAT: 32 - 42

DOEK: 52 % polyester 190 g/m²
46 % scheerwol
2 % elastaan

FUTTER: 100 % Polyester

PFLERGE:



LINING: 100 % polyester

CARE:



DOUBLURE: 100 % polyester

ENTRETIEN:



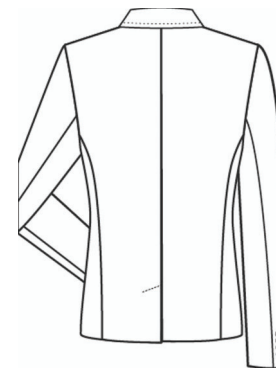
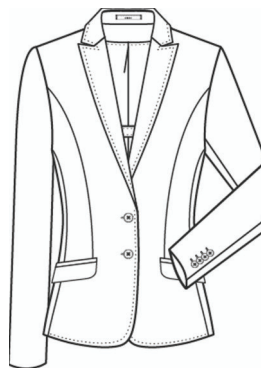
BINNENVOERING: 100 % polyester

ONDERHOUD:



MODERN 37.5

Slim Fit



STYLE 1426



DEUTSCH

Damen-Blazer SF Modern 37.5

- 2-Knopf
- Spitzfacon
- 2 Pattentaschen
- 1 Reißverschluss-Innentasche
- AMF-Handstich
- Rückenschlitz
- halbgefüttert
- Rückenlänge 56 cm | Gr. 38

ENGLISH

L blazer SF Modern 37.5

- 2-button
- peaked lapel
- 2 flap pockets
- 1 zip pocket inside
- AMF hand stitch
- back vent
- half lined
- back length 56 cm | size 38

FRANCAIS

Blazer F SF Modern 37.5

- 2 boutons
- revers à pointe
- 2 poches à rabat
- 1 poche intérieure zippée
- couture AMF
- fente dos
- semi-doublure
- longueur dos 56 cm | taille 38

NEDERLANDS

D blazer SF Modern 37.5

- 2 knoops
- puntig revers
- 2 klepzakken
- 1 binnenzak met ritssluiting
- AMF-stitching
- rugsplit
- half gevoerd
- ruglengte 56 cm | maat 38

NR: 1426.2820.010 schwarz
NR: 1426.2820.014 hellgrau
NR: 1426.2820.021 dunkelblau

NO: 1426.2820.010 black
NO: 1426.2820.014 light grey
NO: 1426.2820.021 dark blue

RÉF: 1426.2820.010 noir
RÉF: 1426.2820.014 gris clair
RÉF: 1426.2820.021 bleu foncé

NR: 1426.2820.010 zwart
NR: 1426.2820.014 lichtgrijs
NR: 1426.2820.021 donkerblauw

GRÖSSEN: 32 - 42
GEWEBE: 52 % Polyester 190 g/m²
46 % Schurwolle
2 % Elasthan

SIZES: 32 - 42
FABRIC: 52 % polyester 190 g/m²
46 % virgin wool
2 % elastane

TAILLES: 32 - 42
TEXTILE: 52 % polyester 190 g/m²
46 % laine vierge
2 % élasthane

MAAT: 32 - 42
DOEK: 52 % polyester 190 g/m²
46 % scheerwol
2 % elastaan

FUTTER: 100 % Polyester
PFLERGE:

LINING: 100 % polyester
CARE:

DOUBLURE: 100 % polyester
ENTRETIEN:

BINNENVOERING: 100 % polyester
ONDERHOUD:

