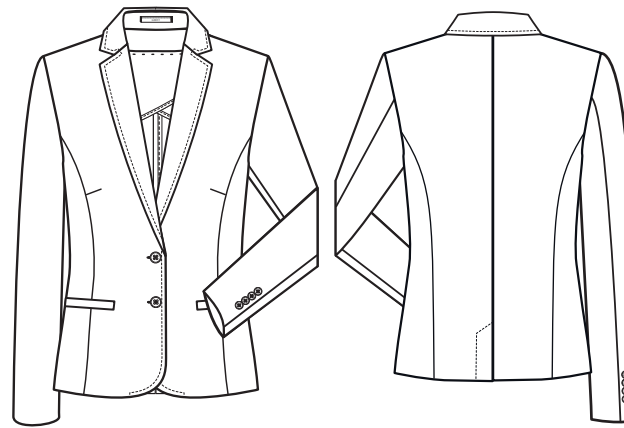


# CASUAL

## Regular Fit

NEU



# STYLE

## 1433



### GERMAN

#### DAMEN-BLAZER

- Regular Fit
- 2-Knopf
- 2 Leistentaschen
- 1 Innetasche
- Rückenschlitz
- Kontrast-Halbfutter
- Rückenlänge 60 cm | Gr. 38
- **GRÖSSEN:** 34-52

NR: 1433.2730.010 SCHWARZ KARIERT

**GEWEBE:** 50% Schurwolle, 50% Polyester, 190 g/m<sup>2</sup>  
**FUTTER:** 100% Polyester

**PFLEGE:**    



### ENGLISH

#### LADIES BLAZER

- regular fit
- 2-button
- 2 welt pockets
- 1 inside pocket
- back vent
- contrast half lining
- back length 60 cm | size 38
- **SIZES:** 34-52

NO: 1433.2730.010 BLACK CHECKED

**FABRIC:** 50% virgin wool, 50% polyester, 190 g/m<sup>2</sup>  
**LINING:** 100% polyester

**CARE:**    



### FRENCH

#### BLAZER FEMME

- Regular fit
- 2 boutons
- 2 poches passepoilées
- 1 poche intérieure
- Fente de dos
- Semi-doublure contrastante
- Longueur dos 60 cm | taille 38
- **TAILLES :** 34-52

RÉF : 1433.2730.010 CARREAUX NOIR

**TEXTILE :** 50 % laine vierge, 50 % polyester, 190 g/m<sup>2</sup>  
**DOUBLURE :** 100 % polyester

**ENTRETIEN :**    



### DUTCH

#### DAMES BLAZER

- regular fit
- 2 knoops
- 2 zijzakken
- 1 binnenzak
- split achterzijde
- half gevoerd met contrasterende stof
- ruglengte 60 cm | maat 38
- **MAAT:** 34-52

NR: 1433.2730.010 ZWART GERUIT

**DOEK:** 50% scheerwol, 50% polyester, 190 g/m<sup>2</sup>  
**BINNENVOERING:** 100% polyester

**ONDERHOUD:**    

